

CITYRANGE[®]

CR-130Ri

PREMIUM[®]



www.rivertekservices.com

KATO

CR-130Ri

PREMIUM®



City Intelligent

New KATO CR-130Ri **Intelligent, Robust, Strong**

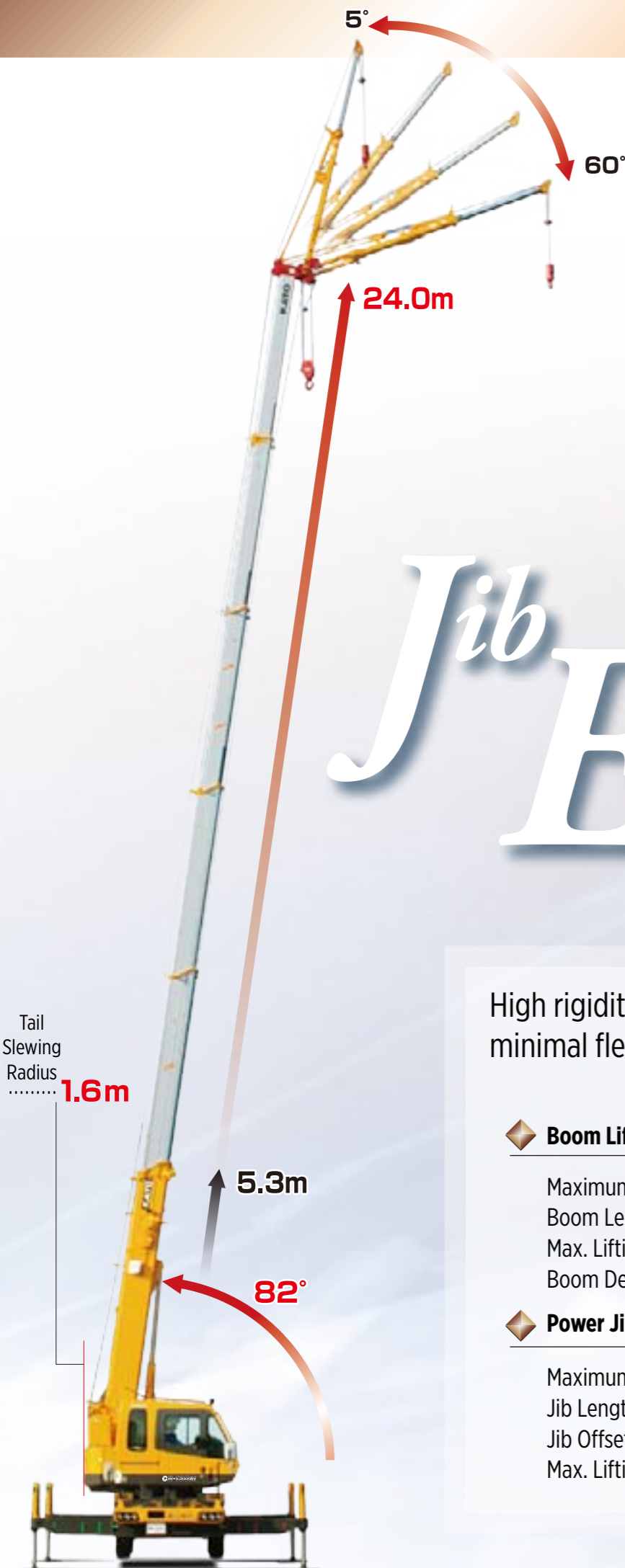
- ▶ 24m, 6 section, rounded shaped superbroom
 - ▶ 13 Ton Lifting Capacity
 - ▶ Increased fuel efficiency
- ▶ 2 stage (3.6m — 5.5m) hydraulic fly jib
 - ▶ Outrigger sensors with 5 outrigger settings with SLI automatic adjustment
 - ▶ Excellent lifting duties
 - ▶ Great operating comfort
- ▶ Superior and innovative technology
 - ▶ Low owning and operating cost
 - ▶ High safety level in operation
 - ▶ More overall productivity
 - ▶ Compact, fast, versatile

A CLEAR WINNER FROM KATO

www.rivertekservices.com

SIMPLE 3 STEP FLY JIB INSTALLATION, ONE MAN OPERATION

Jib Evolution



STEP ①



Insert Fly Jib Pins

STEP ②



Boom Up

Tele Out to release Fly Jib

Drop auxillary hook, boom down, secure auxillary rope to Fly Jib

STEP ③



Lower boom and Fly Jib

Insert Fly Jib Anchor Bars

Ready to Work

High rigidity 6-section Super Boom with minimal flex in vertical and horizontal axis

Boom Lifting Capacity **SUPERBOOM**

- Maximum Lift Capacity **13t × 1.7m**
- Boom Length **5.3m~24m**
- Max. Lifting Height..... **24.8m (Boom)**
- Boom Derricking Angle..... **-7.5°~82°**

Power Jib Lifting Capacity

- Maximum Lift Capacity **1.6t × 75°**
- Jib Length..... **3.6m, 5.5m**
- Jib Offset Angle..... **5°~60°**
- Max. Lifting Height..... **30.3m (JIB)**

H-TYPE OUTRIGGERS



- Min. Ext. **1.64m**
- Int. Ext. **2.70m**
- Int. Ext. **3.70m**
- Int. Ext. **4.30m**
- Max. Ext. **4.75m**

X-TYPE OUTRIGGERS



- Min. Ext. **2.70m**
- Int. Ext. **3.70m**
- Int. Ext. **4.30m**
- Max. Ext. **4.75m**

STRICT ATTENTION PAID TO ALL DETAILS FOR SAFETY

OPTIMAL VISIBILITY and increased freedom and operator awareness

New model ACS (Automatic Crane System) Compuload
 ■ Equipped with slewing automatic stop switch



Easy operation using the latest touch panel colour display
 ■ The hook travel distance is displayed, enabling use in a wide range of conditions
 ■ The working range limiting function can be set using values.

IC Card System
 ■ Anti-theft function
 ■ Crane running data
 ■ Daily reports
 ■ Connect to PC for daily reporting



▲ Crane IC Card [KIC-S]



New colour touch panel for easy operation



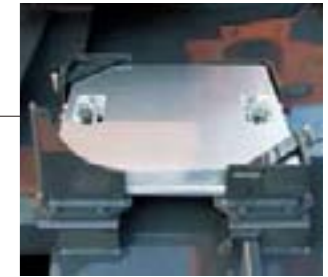
■ Easy view touch screen colour interface
 ■ DPF System Display for easy monitoring/control

Intelligent Cabin



▲ Spacious, ergonomic operator working area to reduce fatigue

Progressive Parts



▲ Aluminium outrigger pads



▲ Xenon headlights



▲ Rear side step



▲ Side view camera (optional)



▲ Aluminium side step



▲ Rear view camera (optional)



▲ Drum camera (optional)



▲ Tool box

Mitsubishi 4M50-LE3BA (with Turbo) Common Rail Diesel Engine

- Strict control of injection pressure and timing produces optimum fuel efficiency.
- Euro stage IIIB Compliant. Flexibility Approval to October 2017.

Designed for the future **KATO**

- Max. Output: **129kW / 2,700min⁻¹**
- Max. Torque.....: **530N·m / 1,600min⁻¹**

These specifications are subject to change without notice. Illustrations and photos show the standard models, and may or may not include optional equipment, accessories, and all standard equipment with some differences in colour and features. Before use, read and understand the Operator's Manual for proper operation. Standard and optional equipment may vary by country, so please consult your KATO dealer for details.



CR-130Ri

PREMIUM
Roughter

CR-130Ri



Authorised Distributor

Rivertek Services Ltd.

Coolowen, Blarney, Co. Cork, Ireland.

Phone: 021 4385342/4381314 Fax: 021 4381504

Email: info@rivertekservices.com Website: www.rivertekservices.com

